

20 PORTABLE AIR CONDITIONERS MONOBLOC UNIT MUPO Series C7/H6



With outlet pipe to the outside



VENTILATION FUNCTION
It allows operation with ventilation only.



REMOTE CONTROL INCLUDED



AIR DISCHARGE TUBE TO THE OUTSIDE
Easy and quick to install, it allows the use of the air conditioner immediately.



DEHUMIDIFICATION
Moisture reduction restoring an optimum temperature in wet areas.



CONDENSATE WATER REMOVAL
Removes condensate water so it is not necessary to connect the air conditioner to a drain. In dehumidification mode and in very humid environments, it is recommended to connect the equipment to a drain.



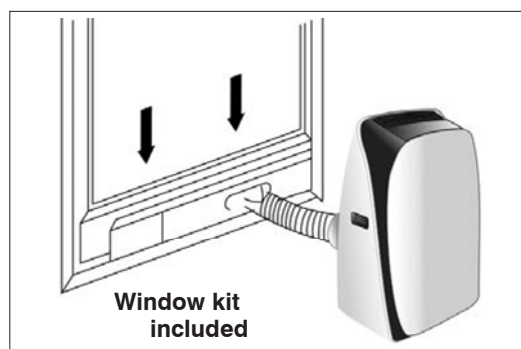
FOLLOW ME FUNCTION (IFEEL)
The wireless remote control adds a temperature sensor (series H6)



MUPO-07-C7
(Cooling only)



MUPO-09-H6
MUPO-12-H6
(Heat pump)



Window kit included

MODEL			MUPO-07-C7	MUPO-09-H6	MUPO-12-H6
Code			CL20009	CL20007	CL20008
Cooling	Rated capacity	kW	2,05	2,6	3,5
	Rated power input P_{EER}	kW	0,78	0,995	1,34
	EERd	W/W	2,62	2,61	2,62
	Energy Efficiency Class		A	A	A
	Electricity consumption Q_{SD}	kWh/h	0,78	0,995	1,315
Heating	Rated capacity	kW	--	2,6	3,3
	Rated power input P_{COP}	kW	--	0,865	1,10
	COPd	W/W	--	3,00	3,00
	Energy Efficiency Class		--	A+	A+
	Electricity consumption Q_{SD}	kWh/h	--	0,865	1,125
Power consumption in thermostat-off mode P_{T0}		W	44	54	70
Power consumption in standby mode P_{SB}		W	0,22	0,259	0,34
Sound power level L_{WA}		dB(A)	65	62	62
Power Supply		V-Hz-F	220-240V ~ 50Hz, 1Ph		
Max. current		A	3,46	6	8
Air flow	Indoor	m ³ /h	300	410	410
	Outdoor	m ³ /h	300	500	570
Air pipe diameter		mm	150	150	150
Refrigerant	Kind		R410A		
	Qty.	kg	0,26	0,4	0,52
	Global warming potential GWP	kgCO ₂ eq.	2088	2088	2088
Dimensions (W x D x H)		mm	305 x 328 x 678	480 x 400 x 795	480 x 400 x 795
Weight		kg	21,0	30	33