

# Installation Instructions for 2G Floating

## SUBFLOOR PREPARATION OF *Wicanders* FLOATING FLOORS

*Wicanders* floating floors can be installed in most domestic areas and in almost all commercial areas except in bathrooms, saunas and persistently wet rooms.

*Wicanders* Floating floors can be laid on top of most hard surfaces such as resilient floor coverings, wood flooring and ceramic tile. Soft subfloors such as carpets and similar must be removed.

The subfloor must be even, flat, dry and variations should not exceed 3 mm in 2 m (0.12" in 6.6 feet).

All type of concrete, wooden and ceramic surfaces must be completely dry.

Never install *Wicanders* floating floors without using a PE moisture barrier film with a minimum thickness of 0,2 mm (.008").

### Radiant-Heated Subfloors:

For *Wicanders* floating floors the surface temperature of the subfloor must not exceed 28°C (82°F). For detailed information, follow the instructions supplied by the subfloor heating system manufacturer/contractor, or contact your supplier.

Remember that rugs or mats placed on top of the floor may function as heat accumulators and will increase the floor surface temperature more than the maximum surface temperature recommended (must not exceed 20 - 22 °C).

### Installation of *Wicanders* Floors over Heated Subfloors:

Any Heated Subfloor has certain working conditions depending on the heating system and the subfloor.

In order to avoid problems with functioning and durability during the construction phase, the norms and rules concerning installation are to be followed very strictly.

The drying of a heated subfloor has to be made by turning the heating on/off with a pause before installation of the floor, following a documented protocol. After that you can begin the "heating phase".

The beginning of the heating phase in concrete subfloors is to be made not before 21 days after complete curing of the substrate.

The heating phase has to begin with running temperature of 25°C, (78°F) during 3 days.

The subfloor should be in place and cured for at least 60-90 days.

The temperature should then be increased each day until the maximum temperature allowed according to the manufacturer system. This maximum value should be kept for at least 72 hours and maintained for 5-7 days without any turning off. The decreasing of temperature is made by reducing it each day until 18°C on the surface is achieved.

During the installation, the temperature of the surface should not exceed 18°C (65°F) and should be kept for 3 days after finishing the installation (for floating floors). Then the temperature should be increased slowly to a max. of 28°C (82°F) on the subfloor surface.

### Expansion Gaps:

*Wicanders* floating floors are installed as a "floating floor", so the planks should not be fixed to the subfloor.

The skirting boards cannot be pressed down, for not restricting the movement of the floor. Also provide 10 mm ( 1/2 inch) expansion gaps to the walls and other fixed objects. 1mm per linear meter, with a minimum of 8mm. Moldings should be 1,5x the size of the expansion gap.

Floor areas superior to 100 m<sup>2</sup> (900 sq. ft) or with dimensions greater than 10 m (30 feet) in either direction, transitions between two rooms and asymmetrical floor areas require extra expansion gaps.

## TRANSPORT, STORAGE AND ACCLIMATISATION

Transport and store the cartons in laying position.

Packaged tiles and adhesive should be acclimatized at job site in dry, well-ventilated area for a minimum of 48 hours so that flooring may acclimate.

### Remove tiles from packages just before starting laying.

During storage and installation, maintain temperature and relative humidity to a level consistent with the conditions which will prevail when the building is occupied. In most cases, this means maintaining temperature range of 18°C to 28°C (65 F to 82F) and relative humidity range of 35% to 65%. In order to reach this climate, use heating or air conditioning in the appropriate length of time prior to beginning installation.

*Wicanders* shade variation is an inherent and attractive characteristic. To achieve the most pleasant blend of shades, shuffle the planks before laying.

# Installation Instructions for 2G Floating

## SITE INSPECTION

Prior to installation, please inspect the tiles in daylight for any visible faults or damage, and also check if the subfloor and site conditions are in accordance with the specifications described within these instructions.

## LAYING:

Wicanders floating floors are natural products and each individual plank has its own shade and pattern. Therefore, shuffle the planks in order to obtain the most pleasant blend of shades. Lay planks preferably following the direction of the main source of light. We recommend laying **Wicanders** floors on wooden floors crossways to the existing floorboard.

## TOOLS AND MATERIALS REQUIRED:

Padsaw or a fine toothed handsaw, spacer blocks, pencil, set square, 0,2mm PE film and adhesive tape.

### Door Frames

If a door frame needs to be cut, use a piece of plank to obtain the correct height.

Saw door frames and architraves to the require height

Allowing for 2 mm of space to the planks.



## Moisture Protection

Despite its age there is always a risk of moisture in subfloors, for that reason it is necessary to ensure that an efficient moisture barrier is installed.

Subfloors must be permanently dry on concrete subfloors without radiant heat, consider the maximum humidity less than 75% RH or conduct calcium chloride moisture tests to ensure that moisture emission levels are less than 3 lbs/1000ft2/24 hours (USA and Canada), or CM Test:

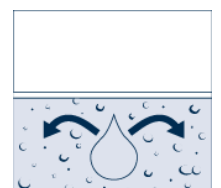
Type of Subfloor	Moisture content CM% Heated	Non-heated
Concrete	1,8	2,0
Anhydrite	0,3	0,5

All types of concrete subfloors require insulation against moisture. This includes types with built-in moisture barrier, ceramic, heated and covered with resilient floors. Use a PE moisture barrier film with a minimum thickness of 0,2 mm (.008"). On ground and basement subfloors we recommend to lay 2 layers crossways for better moisture protection.

Lay the PE film, allowing for at least 20 cm (8") overlapping and tape.

Turn the film upward 5-cm along the walls.

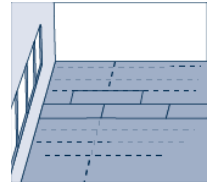
Trim after the skirting boards are fixed.



## Installation Instructions for 2G Floating

Measure the room accurately, at right angle to the direction of the planks.  
The planks in the final row should be at least 5 cm wide.  
If necessary, the planks in the first row can be cut to a smaller size.

Install the planks parallel to incoming light from windows.



If you are installing Wood floors with three strips, try not to match the strips of the tiles.



### First Three Rows:

The planks can be laid from all directions if necessary. Floating floors 2G are easy to install.

We recommend start laying in the right-hand corner.

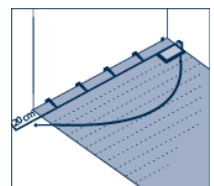
Turn the tongue side of the plank facing the wall.  
Maintain a gap of 10 mm on the short side.  
Adjust the lengthways gap from the wall once 3 rows of planks have been laid.



Hold the next plank against the first at an angle to the first one and lay it flat on the floor.  
Complete the first row in the same way.

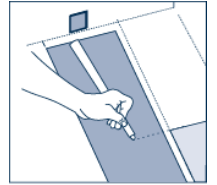


Cut the final plank of the first row to the correct length.

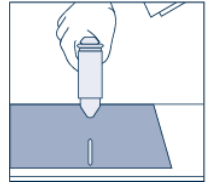


## Installation Instructions for 2G Floating

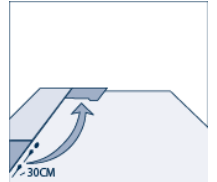
If you are installing floating floor planks, start the next row with the piece left, must be at least 300 mm long). Always ensure that the end joints are staggered at least 300 mm.  
CorkComfort Floating, tiles 605 x 445 “brick” or “half brick” installation method must be used.  
Place the final plank face down and the short side without the locking strip towards the wall. The distance to the wall should be 10 mm.



Mark where the floorboard is to be cut.  
Place the plank face down on the work surface and cut to size using a padsaw.  
Use a fine toothed type if you are using a handsaw. In this case, cut the planks face up.



Use a cut piece of plank from the previous row to start the next row.  
This must be at least 30 cm long. If the piece is too short, start with a new board and cut it in half. Always ensure that the end joints are staggered at least 30 cm.



Place the first plank of the new row with the tongue side at an angle against the groove side of the plank in the previous row.

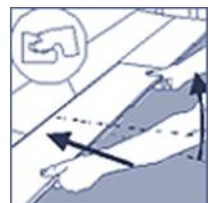
Press forward and lay it flat at the same time.



Place the short end of the plank at an angle against the previous installed plank and fold down.  
Ensure that the board is positioned on the integral locking strip of the floorboard in the previous row.

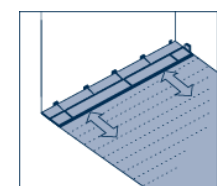


Lift floorboard (together with the previous laid in the same row) lightly up (about 30 mm), push it against the row in front and then put it down.



Tip: This movement requires some gentle adjustments on the pressing angle. Adjust the distance to the wall to 10 mm when three rows are completed.

Proceed the installation as described above until reaching the opposite wall.

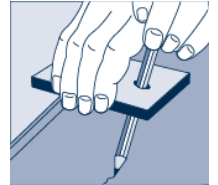


## Installation Instructions for 2G Floating

### Uneven wall:

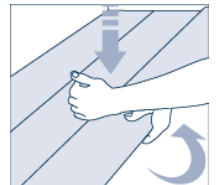
Sometimes the first row must be cut to match an uneven wall.

Transfer the shape of the wall to the planks. Do not forget to allow 10 mm for the expansion gap.



To remove the first row, lift the plank a few centimetres and tap along the joint.

Cut the planks as required.

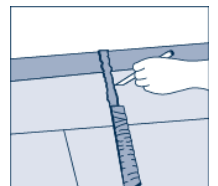


### Last Row:

Measure and cut the planks in the last row to size.

Allow for 10 mm distance to the wall.

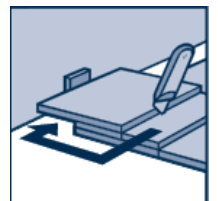
No plank should be less than 5 cm width.



The last and first plank can be cut in the correct width. Place the last plank on top the second to last plank.

Mark the plank with the help of a piece of plank without locking the strip.

Allow for 10mm distance to the wall for the expansion gap.



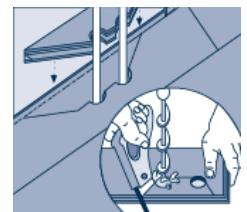
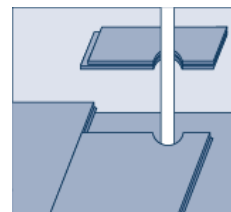
### Heating Pipes:

Drill required holes in the planks.

If the pipes passing through the floor make a hole on the plank 20mm greater than the pipe diameter.

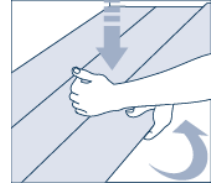
Cut the plank with a 45° angle towards the hole. The cut-off piece is glued in the position again.

Cover the hole with a pipe sleeve.

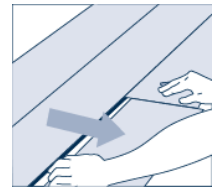


## Installation Instructions for 2G Floating

If you wish to remove the flooring, just lift the planks a few centimetres and tap along the joint.



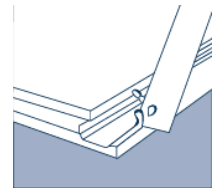
The released plank can then be pulled out.  
Never bend connected plank backwards, as this will damage the planks.



### INSTALLATION AROUND DOORS, RADIATORS AND LAST ROWS:

If necessary, the planks can be laid from all directions. This makes easier to plan the installation e.g. around doors.

If you cannot angle the tile under e.g. a doorframe or low fitted radiator, you can do as the picture shows: cut away the locking edge.



Glue (PVA Glue, class D3). Install the plank